

# FOR SALE

FLAT 6: 710 sq.ft (65.9 sq.m)

FLAT 7: 624 sq.ft (57.9 sq.m)

x2 GARAGES: 150 sq.ft ea

**OIEO £150,000**



**M**

**FLATS 6&7**

/// [cages.slower.tricks](http://cages.slower.tricks)

Burlington Court  
597-619 Mansfield Road, Nottingham  
NG5 2FW

## DESCRIPTION

Flats 6 & 7 at Burlington Court offer well-proportioned two-bedroom apartments set within a sought-after residential development in Nottingham.

Both flats provide comfortable and practical living accommodation, ideal for owner-occupiers or investors alike. Flat 6 extends to approximately 710 sq.ft, while Flat 7 offers around 624 sq.ft, each benefitting from a well-balanced layout designed for modern living. The sale also includes two garages, each measuring approximately 150 sq.ft.

Burlington Court is well positioned within the wider Nottingham area, offering convenient access to the city's key amenities while benefiting from a residential setting. Nottingham city centre is within easy reach, providing a wide range of shopping, dining, leisure and cultural attractions, along with excellent employment and education opportunities. The location is well served by local transport links, connecting residents to surrounding neighbourhoods and the wider region, while nearby road networks offer straightforward access to major routes.

## AREAS

Flat 6: 710 sq.ft (65.9 sq.m)

Flat 7: 624 sq.ft (57.9 sq.m)

x2 Garages: 150 sq.ft ea (13.9 sq.m)

## TENURE

Long leasehold

## PRICE

Offer in excess of £150,000 for both flats

## SERVICE CHARGE & INSURANCE

Combined Service Charge: £2,937.16

Combined Insurance: Approx £600

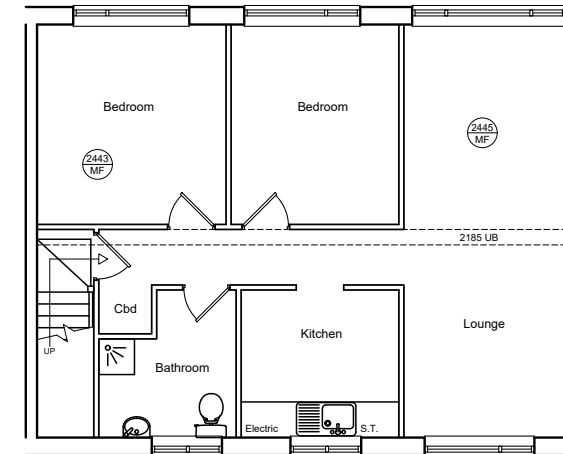
## COUNCIL TAX

Please enquire with the local council.

## ENERGY PERFORMANCE

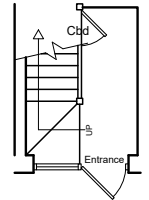
EPC rating D. Further information available upon request.

## FLAT 6



First Floor Plan

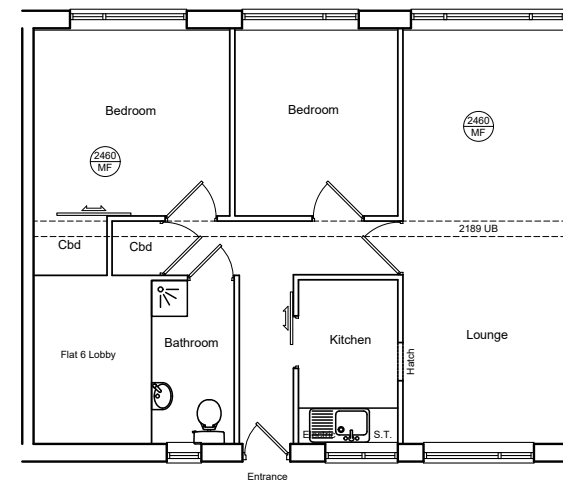
Area - GIA  
61.41 qsm (665.35 sq ft)



Ground Floor Plan

Area - GIA  
4.22 sqm (45.46 sq ft)

## FLAT 7



Floor Plan

Area - GIA  
57.95 qsm (623.82 sq ft)



# BURLINGTON COURT

# FLATS 6&7



**Kristien Neve**

07778 140729

[KNeve@lcpproperties.co.uk](mailto:KNeve@lcpproperties.co.uk)

MISREPRESENTATION ACT, 1967 London & Cambridge Properties Limited (Company Number 02895002) the registered office of which is at LCP House, Pensnett Estate, Kingswinford, West Midlands DY6 7NA its subsidiaries (as defined in section 1156 of the Companies Act 2006) associated companies and employees ("we") give notice that: Whilst these particulars are believed to be correct no guarantee or warranty is given, or implied therein, nor do they form any part of a contract. [We do our best to ensure all information in this brochure is accurate. If you find any inaccurate information, please let us know and where appropriate, we will correct it.] We make no representation that information is accurate and up to date or complete. We accept no liability for any loss or damage caused by inaccurate information. This brochure gives a large amount of (statistical) information and there will inevitably be errors in it. Intending purchasers or tenants should not rely on the particulars in this brochure as statements or representations of fact but should satisfy themselves by inspection or otherwise as to the correctness of each of them. We provide this brochure free of charge and on the basis of no liability for the information given. In no event shall we be liable to you for any direct or indirect or consequential loss, loss of profit, revenue or goodwill arising from your use of the information contained herein. All terms implied by law are excluded to the fullest extent permitted by law. No person in our employment has any authority to make or give any representation or warranty whatsoever in relation to the property. SUBJECT TO CONTRACT. We recommend that legal advice is taken on all documentation before entering into a contract. You should be aware that the Code of Practice on Commercial Leases in England and Wales strongly recommends you seek professional advice from a qualified surveyor, solicitor or licensed conveyancer before agreeing or signing a business tenancy agreement. The Code is available through professional institutions and trade associations or through the website <https://www.rics.org/uk/upholding-professional-standards/sector-standards/real-estate/code-for-leasing-business-premises-1st-edition/>. LCP's privacy notices that apply to its use of your personal information are at [www.lcpgroup.co.uk/policies](http://www.lcpgroup.co.uk/policies). The privacy notice that applies to you will depend on the nature of your relationship with LCP, and in some cases more than one may apply to you. LCP's privacy policy giving a high level overview of how LCP approaches data protection and your personal information can be found at [www.lcpproperties.co.uk/uploads/files/LCP-Privacy-Web-and-Data-Policy-May-2018.pdf](http://www.lcpproperties.co.uk/uploads/files/LCP-Privacy-Web-and-Data-Policy-May-2018.pdf).