

  
**3.4m**  
Annual Footfall

  
**650**  
Parking Spaces

  
**373k** Catchment Population  
within a 15 minute drive time

**A district centre entering  
it's next chapter**



**BRAND NEW LIDL  
DEVELOPMENT  
COMING SOON**



**BENEFITING FROM MAJOR INVESTMENT  
AND FAÇADE IMPROVEMENTS**



INDICATIVE IMAGERY



**M NORTHFIELD SHOPPING CENTRE**

///boxer.pint.played

Bristol Road South  
Birmingham  
B31 2JU

**SHEET ANCHOR  
EVOLVE**  
part of IM Core  
020  
7228  
6508  
sheetanchorevolve.com



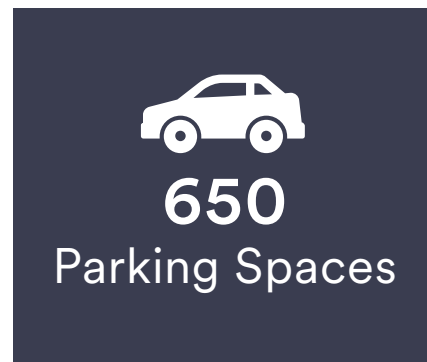
Northfield Shopping Centre is the principal retail destination serving Northfield and the surrounding South Birmingham communities.

Located prominently on Bristol Road South (A38), the centre sits at the heart of the town centre and plays a vital role in meeting the area's everyday shopping needs.

The scheme provides a covered shopping environment supported by substantial car parking with over 650 spaces, serving both the centre and the wider high street. It supports a broad mix of convenience, value and service-led occupiers, reflecting the needs of its local catchment.

Supermarkets in the town include Aldi and Sainsbury's. These are located a 5 minute walk (0.3 miles) south west of the scheme at the junction of Bristol Road South/ Frankley Beeches Road and the A38.

Other nearby retail centres include the newly developed Longbridge town centre and the Selly Oak Shopping Park. Occupiers in Longbridge town centre include Marks & Spencer, Boots, Mountain Warehouse, Smyths Toystore, EE and Sainsbury's.





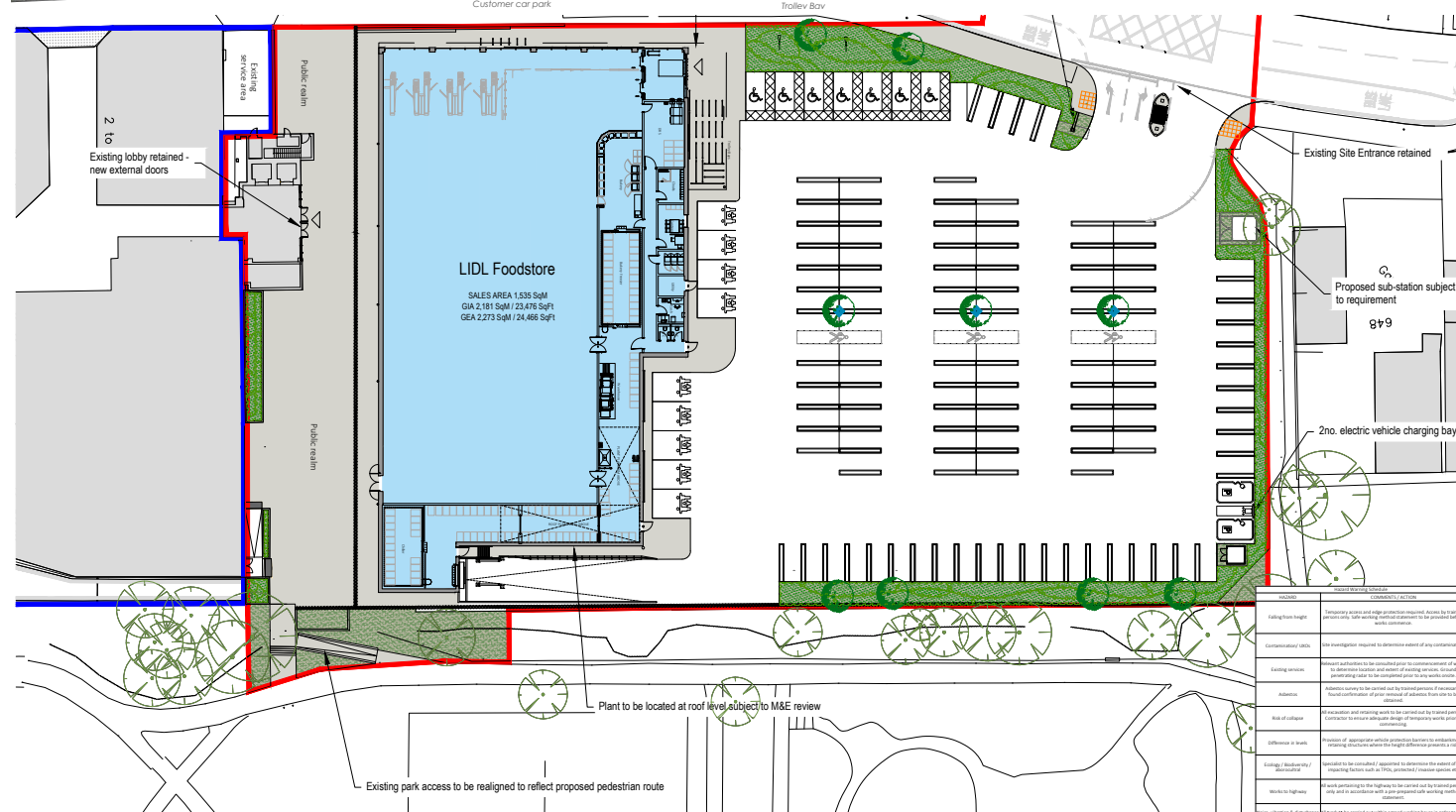
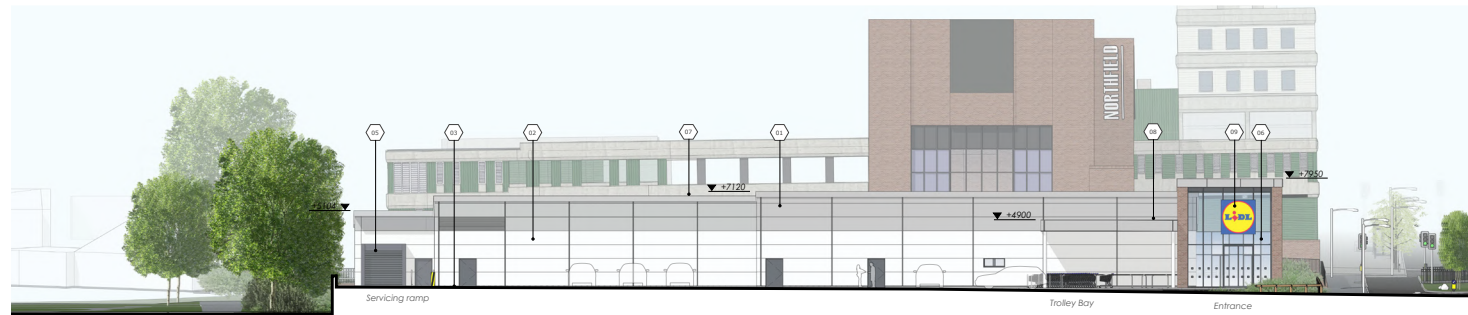
A defining element of Northfield's evolution is the approved redevelopment of Phase Two, which will feature Lidl creating a brand new anchor store on one side of the development.

The development includes the demolition of part of the existing shopping centre to enable the delivery of a modern Lidl foodstore, representing significant new investment into the heart of Northfield.

The Lidl development will introduce:

- A contemporary, convenience-led foodstore
- New public realm and landscaping
- Enhanced pedestrian connections between the store, the retained centre and Victoria Common
- Dedicated customer parking, cycle facilities and EV charging

As a high-frequency convenience anchor, Lidl will drive regular, repeat visits, reinforcing Northfield's role as a destination for everyday shopping and supporting linked trips across the retained shopping centre and wider town centre.



### Location

Northfield Shopping Centre occupies a prominent position on Bristol Road South (A38), at the heart of Northfield town centre. The scheme benefits from strong visibility, excellent accessibility and a well-established role serving the surrounding residential communities of South Birmingham.



Northfield is conveniently located just south of Birmingham city centre, with direct access via the A38 and A441. The town is also easily reached from the south through Junction 4 of the M5 motorway, and from the west via Junction 2 of the M42 motorway.



Rail services, operated by London Midland, provide regular direct connections from Northfield to Birmingham New Street in around 18 minutes. From Birmingham, frequent direct services run to London Euston (from 1 hour 13 minutes), Manchester Piccadilly (from 1 hour 28 minutes), Nottingham railway station (from 1 hour 9 minutes) and Leicester railway station (from 1 hour 50 minutes).



Bus services, operated by National Express West Midlands, connect Northfield with Birmingham city centre and surrounding areas, including Longbridge, Bournville and Kings Norton.



Birmingham Airport is situated approximately 13.5 miles (22 km) north-east of Northfield. It can be reached in around 24 minutes by car via the M42, or by train from Birmingham city centre, with a journey time of just 9 minutes from Birmingham New Street.



### ALL ENQUIRIES:

**SHEET ANCHOR  
EVOLVE**

part of **MC**Core

020  
7228  
6508

sheetanchor@evolve.com



**Sam Cohen** 07787 392 840  
SCohen@saevolve.com

**Rakesh Joshi** 07741 385 322  
RJoshi@lcpproperties.co.uk

**Creative Retail**

0121 400 0407

www.creative-retail.co.uk

**Scott Robertson** 07831 856 733  
scott@creative-retail.co.uk

MISREPRESENTATION ACT, 1967 London & Cambridge Properties Limited (Company Number 02895002) the registered office of which is at LCP House, Pensnett Estate, Kingswinford, West Midlands DY6 7NA its subsidiaries (as defined in section 1156 of the Companies Act 2006) associated companies and employees ("we") give notice that: Whilst these particulars are believed to be correct no guarantee or warranty is given, or implied therein, nor do they form any part of a contract. [We do our best to ensure all information in this brochure is accurate. If you find any inaccurate information, please let us know and where appropriate, we will correct it.] We make no representation that information is accurate and up to date or complete. We accept no liability for any loss or damage caused by inaccurate information. [This brochure gives a large amount of (statistical) information and there will inevitably be errors in it]. Intending purchasers or tenants should not rely on the particulars in this brochure as statements or representations of fact but should satisfy themselves by inspection or otherwise as to the correctness of each of them. We provide this brochure free of charge and on the basis of no liability for the information given. In no event shall we be liable to you for any direct or indirect or consequential loss, loss of profit, revenue or goodwill arising from your use of the information contained herein. All terms implied by law are excluded to the fullest extent permitted by law. No person in our employment has any authority to make or give any representation or warranty whatsoever in relation to the property. SUBJECT TO CONTRACT. We recommend that legal advice is taken on all documentation before entering into a contract. You should be aware that the Code of Practice on Commercial Leases in England and Wales strongly recommends you seek professional advice from a qualified surveyor, solicitor or licensed conveyancer before agreeing or signing a business tenancy agreement. The Code is available through professional institutions and trade associations or through the website <https://www.rics.org/uk/upholding-professional-standards/sector-standards/real-estate/code-for-leasing-business-premises-1st-edition/>. LCP's privacy notices that apply to its use of your personal information are at [www.lcpgroup.co.uk/policies](http://www.lcpgroup.co.uk/policies). The privacy notice that applies to you will depend on the nature of your relationship with LCP, and in some cases more than one may apply to you. LCP's privacy policy giving a high level overview of how LCP approaches data protection and your personal information can be found at [www.lcpproperties.co.uk/uploads/files/LCP-Privacy-Web-and-Data-Policy-May-2018.pdf](http://www.lcpproperties.co.uk/uploads/files/LCP-Privacy-Web-and-Data-Policy-May-2018.pdf).