



TO LET
Retail Unit 15
2,243 sq.ft
(208 sq.m)



UNIT 15

St Thomas Centre
Exeter, Devon
EX4 1AJ

Local Occupiers Include



ST THOMAS CENTRE

UNIT 5

DESCRIPTION

The property is within the popular and well established St Thomas neighbourhood centre situated in Cowick Street in the residential suburb of St Thomas, approximately 1 mile from the city centre of Exeter.

- 100+ free parking spaces onsite
- Anchored by the Co-op supermarket and a number of national retailers including Dominos, William Hill, Hays Travel, and Greggs

AREAS (Approx. Gross Internal)

TOTAL	2,243 sq.ft	(208 sq.m)
--------------	--------------------	-------------------

RENT

£40,000 per annum + VAT.

BUSINESS RATES

Rateable Value: £36,000

SERVICE CHARGE & INSURANCE

Service Charge: £6,134 per annum + VAT.

Insurance: £1,102 per annum + VAT

ENERGY PERFORMANCE

EPC: C. Further information available upon request.

PLANNING

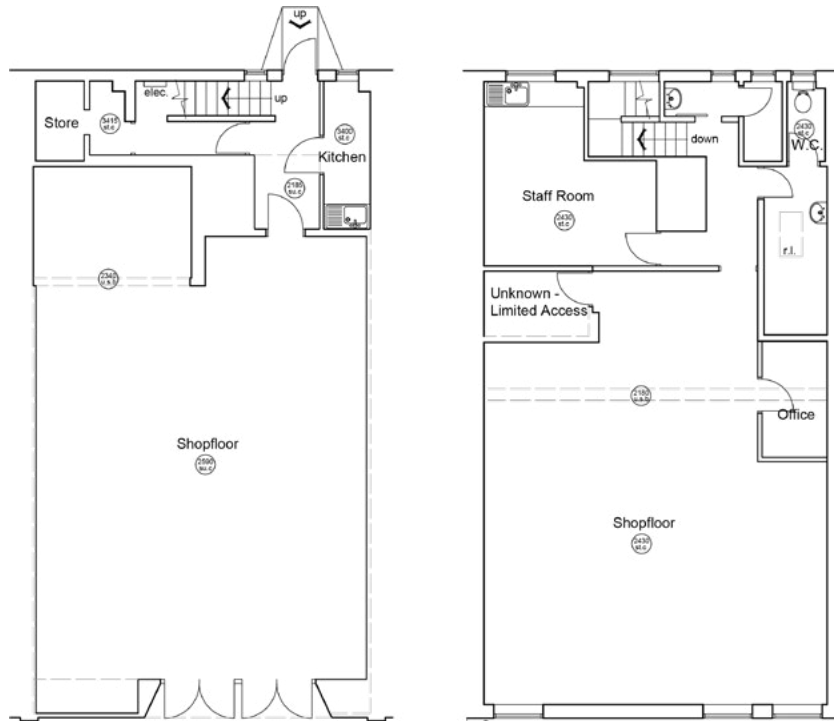
Subject to planning. It is the incoming tenant's responsibility to verify that their intended use is acceptable to the Local Planning Authority.

LEGAL COSTS

Each party is responsible for their own legal costs in connection with the granting of a lease.

VAT

VAT is payable on all sums due to the landlord under the terms of the lease.



24

Retail Units On-Site



39,673 sq.ft

Total Area



What Three Words
dash.thus.cone

