

ORCHARD HOUSE



Office Space TO LET

First floor office space

7,130 sq.ft MAY SPLIT
(662 sq.m)



**Office Accommodation, Orchard House, Station Road,
Rainham, Kent ME8 7RS**

- Gas Central heating
- Perimeter trunking
- Walking distance to main line station
- High street entrance

**SHEET ANCHOR
EVOLVE**

part of MCore

**020
7228
6508**

sheetanchorevolve.com

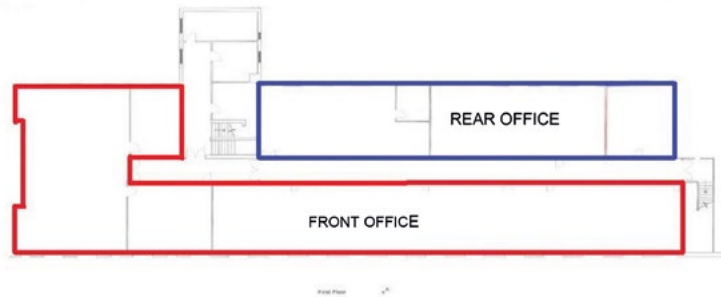


Office Accommodation, Orchard House, Station Road, Rainham, Kent ME8 7RS

Description

The property forms a first floor office suite within a high street parade. The offices provide for open plan office accommodation which has a separate meeting room and kitchen break out area. The offices benefit from gas central heating and perimeter trunking.

Floor	Size Sq.ft	Size Sq.m	Rent
1st Floor (FRONT)	4,575	425	POA
1st Floor (REAR)	2,555	237	POA
TOTAL	7,130	662	



Rent

POA.

Service Charge

Service charge is payable for the maintenance of common parts. The service charge is subject to annual reconciliation.

Rateable Value

The property is currently assessed as separate suites and will need to be reassessed upon occupation.

Energy Performance

D - 96. Further information available on request.

Planning

An incoming tenant must satisfy themselves that their proposed use is acceptable to the Local Planning Authority.

Legal Costs

Each party is to be responsible for their own legal and professional costs incurred in any transaction.

Location

The property is situated approximately 10 miles from Junction 4 of the M2 and within walking distance of Rainham mainline station which provides services to London St Pancras and London Victoria with a journey time of under an hour. The property is well serviced by the local shopping centre and high street facilities.



MISREPRESENTATION ACT, 1967 London & Cambridge Properties Limited (Company Number 02895002) the registered office of which is at LCP House, Pensnett Estate, Kingswinford, West Midlands DY6 7NA its subsidiaries (as defined in section 1156 of the Companies Act 2006) associated companies and employees ("we") give notice that: Whilst these particulars are believed to be correct no guarantee or warranty is given, or implied therein, nor do they form any part of a contract. [We do our best to ensure all information in this brochure is accurate. If you find any inaccurate information, please let us know and where appropriate, we will correct it.] We make no representation that information is accurate and up to date or complete. We accept no liability for any loss or damage caused by inaccurate information. [This brochure gives a large amount of statistical information and there will inevitably be errors in it.] Intending purchasers or tenants should not rely on the particulars in this brochure as statements or representations of fact but should satisfy themselves by inspection or otherwise as to the correctness of each of them. We provide this brochure free of charge and on the basis of no liability for the information given. In no event shall we be liable to you for any direct or indirect or consequential loss, loss of profit, revenue or goodwill arising from your use of the information contained herein. All terms implied by law are excluded to the fullest extent permitted by law. No person in our employment has any authority to make or give any representation or warranty whatsoever in relation to the property. SUBJECT TO CONTRACT. We recommend that legal advice is taken on all documentation before entering into a contract. You should be aware that the Code of Practice on Commercial Leases in England and Wales strongly recommends you seek professional advice from a qualified surveyor, solicitor or licensed conveyancer before agreeing or signing a business tenancy agreement. The Code is available through professional institutions and trade associations or through the website <https://www.rics.org/uk/upholding-professional-standards/sector-standards/real-estate/code-for-leasing-business-premises-1st-edition/>. LCP's privacy notices that apply to its use of your personal information are at www.lcpgroup.co.uk/policies. The privacy notice that applies to you will depend on the nature of your relationship with LCP, and in some cases more than one may apply to you. LCP's privacy policy giving a high level overview of how LCP approaches data protection and your personal information can be found at www.lcpproperties.co.uk/uploads/files/LCP-Privacy-Web-and-Data-Policy-May-2018.pdf.

11-05-26 MAY26

Viewing Strictly via prior appointment with the appointed agents:

Owned and Managed by

**SHEET ANCHOR
EVOLVE**

part of **MCore**

**020
7228
6508**

sheetanchorevolve.com



Adam Davies

7792 701593
adavies@saevolve.com



Rory Gittins

07721 127212
rory@cited.co.uk