



**CROWN WALK**  
**PIONEER SQUARE**  
 BY **MI**

**Crown Walk**

Unit 1 To Let	Unit 19 Crown Dry Cleaners
Unit 2 Shots	Unit 20-23 Coles Books
Unit 3 Options	Unit 24-25 W&A Smith
Unit 4 Wood Green Animal Shelters	Unit 28 Ringo Jewellers
Unit 5 Bales Bakery	Unit 29 Vodafone
Unit 6 Boots Opticians	Unit 30 Hays Travel
Unit 7 Kings Barbers	Unit 31 Hill, Hill and Henry
Unit 14 Fartham Jewellers	Unit 32 H&A Low
Unit 17 Edith & Moi	Unit 33 To Let
Unit 18 Diamond Halls Worth	

**Evans Yard**

Unit 1 German Power Kubab	Unit 3 To Let
Unit 1a New retailer coming soon	Unit 4 Robert Stanley Opticians

**Welcome to Crown Walk**

To help ensure there is a safe environment there is a Centre Management team with 24 hour CCTV coverage. Please do not drink alcohol or use mobile phones in the public areas. Bicycles are provided for your convenience. Please do not ride bikes on the footpaths or sidewalks on the paved areas. Enjoy your visit to Crown Walk and we hope you come back soon. The Centre Management Team

# COLES BOOKS

22 Crown Walk

**BUY O**  
 Choose from t  
 books on our  
 we'll deliver to  
 www.coles-b

**CROWN WALK BY MI**

///levels.drift.plates  
 Crown Walk, Bicester  
 Oxfordshire  
 OX26 6HY

Occupiers Include

**BoyleSports**  
**Hays Travel**

**Boots**  
 Optician &  
 Hearing Aids



### DESCRIPTION

Crown Walk by M is an open air retail centre, originally constructed in 1988. The scheme is an 'L' shaped scheme, with the eastern entrance fronting the pedestrianised Sheep Street and the southern entrance fronting Bicester's Market Square.

The scheme also has an entrance through on to Bure Place. Tenants in Crown Walk include; Biagio Jewellers, Boots Opticians, Hays Travel, Coles Books and Gyoshoya.

### RATEABLE VALUE

Properties in Crown Walk by M are suitable for a variety of retail, leisure and food & beverage uses. Interested parties must satisfy themselves that their proposed use is acceptable to the Local Planning Authority.

### SERVICE CHARGE & INSURANCE

Information provided upon application.

### ENERGY PERFORMANCE

Further information available upon request.

### PLANNING

The site holds a Use Class E planning consent, allowing for a wide range of retail and food uses. It is the ingoing tenant's responsibility to verify that their intended use is acceptable to the Local Planning Authority.

### LEGAL COSTS

Each party is responsible for their own legal costs in connection with the granting of a lease.



**53,740** sq.ft

Total development



**32**

Lettable units on site



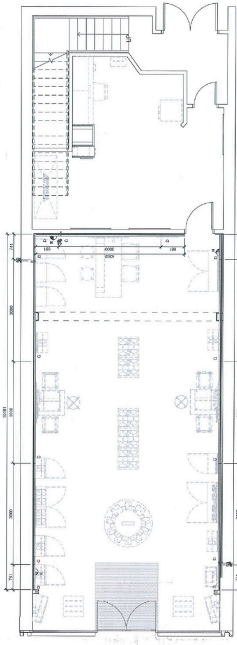
**levels.drift.plates**

What Three Words

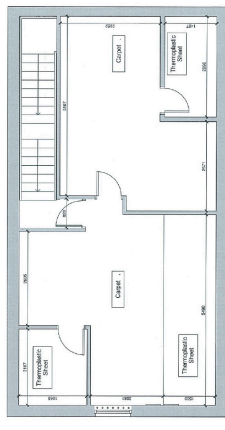


UNIT 29	sq.ft	sq.m
Ground Floor	1,124	104.4
First Floor	539	50.1
<b>TOTAL</b>	<b>1,663</b>	<b>154.5</b>
RENT	£30,000	
RATEABLE VALUE	£18,750	
SERVICE CHARGE	£2,500 approx	
INSURANCE	TBC	
EPC	D:88	

GROUND FLOOR PLAN



FIRST FLOOR PLAN





 View on Google Maps

## LOCATION

Crown Walk by M is an open air retail centre, originally constructed in 1988. The scheme is an 'L' shaped scheme, with the eastern entrance fronting the pedestrianised Sheep Street and the southern entrance fronting Bicester's Market Square. The scheme also has an entrance through on to Bure Place.

Crown Walk by M is located at the heart of Bicester town centre, and forms part of the predominant retail circuit through the town, linking Sheep Street to the east with Pioneer Square to the north (along Bure Place). The main car parking provision in Bicester is located in the 485 space multi-storey car park at Pioneer Square.

## SERVICES



Ample Parking  
Spaces Nearby



Service Area



**Charlie Sankey**

07774 650125

CSankey@lcpproperties.co.uk

**Viewing**  
Strictly via prior appointment  
with the appointed agents:

**CREATIVE RETAIL**  
PROPERTY CONSULTANTS

**0121 400 0407**

www.creative-retail.co.uk

**Scott Robertson**

0121 400 0407

scott@creative-retail.co.uk

**jrbt** Commercial  
Property

**01865 595143**

info@jrbtcommercialproperty.co.uk

**Jonathan Thomas**

01865 595 143

jonathan@jrbtcommercialproperty.co.uk

MISREPRESENTATION ACT, 1967 London & Cambridge Properties Limited (Company Number: 02895002) the registered office of which is at LCP House, Pensnett Estate, Kingswinford, West Midlands DY6 7NA its subsidiaries (as defined in section 1166 of the Companies Act 2006) associated companies and employees (we) give notice that: Whilst these particulars are believed to be correct no guarantee or warranty is given, or implied therein, nor do they form any part of a contract. [We do our best to ensure all information in this brochure is accurate. If you find any inaccurate information, please let us know and where appropriate, we will correct it.] We make no representation that information is accurate and up to date or complete. We accept no liability for any loss or damage caused by inaccurate information. [This brochure gives a large amount of (statistical) information and there will inevitably be errors in it. Intending purchasers or tenants should not rely on the particulars in this brochure as statements or representations of fact but should satisfy themselves by inspection or otherwise as to the correctness of each of them. We provide this brochure free of charge and on the basis of no liability for the information given. In no event shall we be liable to you for any direct or indirect or consequential loss, loss of profit, revenue or goodwill arising from your use of the information contained herein. All terms implied by law are excluded to the fullest extent permitted by law. No person in our employment has any authority to make or give any representation or warranty whatsoever in relation to the property. SUBJECT TO CONTRACT. We recommend that legal advice is taken on all documentation before entering into a contract. You should be aware that the Code of Practice on Commercial Leases in England and Wales strongly recommends you seek professional advice from a qualified surveyor, solicitor or licensed conveyancer before agreeing or signing a business tenancy agreement. The Code is available through professional institutions and trade associations or through the website: https://www.rics.org/uk/upholding-professional-standards/sector-standards/real-estate/code-for-leasing-business-premises-1st-edition/. LCP's privacy notices that apply to its use of your personal information are at www.lcpgroup.co.uk/policies. The privacy notice that applies to you will depend on the nature of your relationship with LCP, and in some cases more than one may apply to you. LCP's privacy policy giving a high level overview of how LCP approaches data protection and your personal information can be found at www.lcpproperties.co.uk/uploads/files/LCP-Privacy-Web-and-Data-Policy-May-2018.pdf.